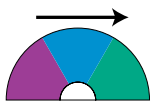


# Tinting Guide

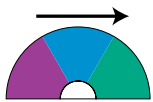


## Blues



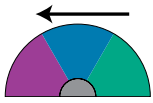
**Green Shade Trans Blue** 401 0341

Blue with a green face and a very red flop. Should only be used if already in formula.



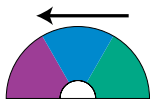
**Bright Blue** 401 0342

Blue with a green face and slightly red flop.



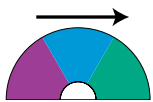
**HS Red Shade Blue** 401 0343

Red face and red flop blue. Used to tint solid, metallic, and pearl colors.



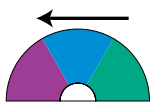
**HS Indo Blue** 401 0345

Our reddest shade blue on the face and flop. Gives a red cast to both solid and metallic colors. Appears very red and dirty.



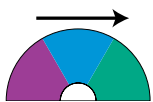
**Low Strength Blue** 401 0347

Used to increase mixing accuracy in whites, silvers and pastel colors. Blue with a green face and slightly red flop.



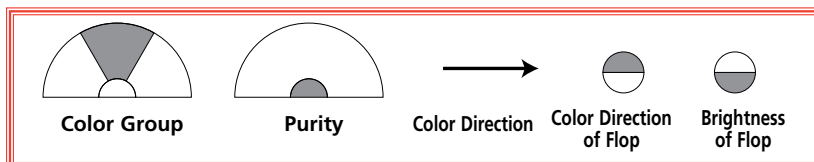
**Red Trans Blue** 401 0348

Unique transparent red face and slightly green flop. Used to tint metallic and pearl colors. Should only be used if already in the formula.



**Green Shade Blue** 401 0349

Blue with a green face and green flop. Our greenest on the face and flop. Gives a clean green cast in both metallic and solid colors.



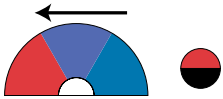
**ASK**



# Tinting Guide



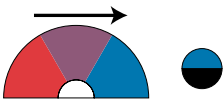
## Violets



**Purple**

**401 0346**

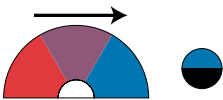
Very red shade blue on the face and flop. Do not use unless already in the formula.



**Violet**

**401 0370**

Blue cast in solid and metallic colors on the face and flop. Blue and dirty compared to 401 0380, Magenta.



**Low Strength Violet**

**401 0371**

Used to increase mixing accuracy in whites, silvers and pastel colors. Gives a blue cast in solid and metallic colors.

## Magentas and Maroons



**Maroon**

**401 0351**

Gives a blue face with a yellow flop. Used in maroons and dark red metallics.



**Magenta**

**401 0380**

Clean blue cast in solid and metallic colors. Cleaner in metallics than Violet 401 0370.



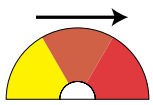
**ASK**



# Tinting Guide



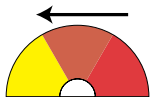
## Reds and Oranges



**Fast Orange**

401 0320

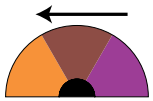
Dirty opaque orange for use in solid red, yellow and orange colors. Not as bright and clean as 401 0321 Bright Orange in full strength or in red combinations.



**Bright Orange**

401 0321

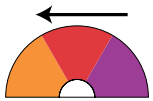
Very clean orange for use in solid red, yellow and orange colors. Not to be used for tinting metallics or white.



**Red Oxide**

401 0381

Very opaque dirty yellow shade red. Excellent to tint solid white. Use only small amounts when tinting metallic colors.



**Bright Red**

401 0382

Clean opaque red for use in solid red, yellow and orange colors. Do not use in white or metallics.



**Blue Shade Red**

401 0383

Blue shade red on the face and flop. Used in solid reds, whites, and red metallics.



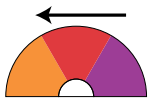
**ASK**



# Tinting Guide



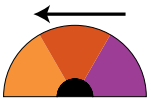
## Reds and Oranges



**Scarlet Red**

401 0385

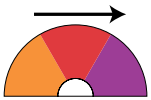
Very transparent bright yellow shade red. Use for metallic and pearl colors.



**Low Strength Red**

401 0386

Used to increase mixing accuracy in whites, silvers and pastel colors. Very opaque, dirty yellow shade red.



**Laser Red**

401 0387

Highly transparent blue shade red with high chroma used to make red midcoats and chromatic solid reds.



**Brilliant Red**

401 0388

Very transparent bright blue shade red. Use for metallic and pearl colors.



**ASK**

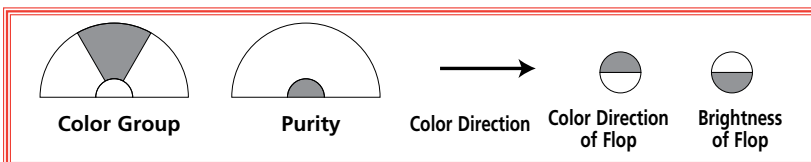


# Tinting Guide



## Yellows

	<b>Transoxide Yellow</b>	<b>401 0400</b>	Transparent green shade yellow. Used in gold and silver metallic colors.
	<b>Yellow Oxide</b>	<b>401 0401</b>	Very opaque dirty yellow. Gives a dirty yellow cast to solid colors.
	<b>Trans Yellow</b>	<b>401 0402</b>	Red shade yellow on the face with a light red flop.
	<b>Green Shade Yellow</b>	<b>401 0403</b>	Used primarily in metallics. Transparent yellow with a green face and very green flop.
	<b>Pale Yellow</b>	<b>401 0404</b>	Green shade very opaque yellow. Lacks color intensity. Weak tinting effect.
	<b>Bright Yellow</b>	<b>401 0405</b>	Bright yellow with a slightly green cast. Our cleanest yellow.
	<b>Fast Yellow</b>	<b>401 0406</b>	Bright green shade yellow used in solid red, yellow and orange colors.
	<b>Low Strength Yellow</b>	<b>401 0407</b>	Used to increase mixing accuracy in whites, silvers, ferrite and pastel colors. Very opaque dirty yellow.
	<b>Red Shade Yellow</b>	<b>401 0408</b>	Red shade yellow on the face with a light red flop.



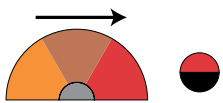
**ASK**



# Tinting Guide



## Gold

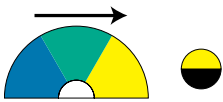


**Red Transoxide**

401 0360

Dirty transparent red shade gold. Gives a red brown cast on the face and flop.

## Greens



**Yellow Shade Green**

401 0330

Green with a yellow cast on the face and flop.

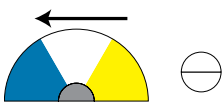


**Blue Shade Green**

401 0331

Green with a blue cast on the face and flop.

## White



**White**

401 0390

High strength bright white.

## Blacks



**Deep Black**

401 0310

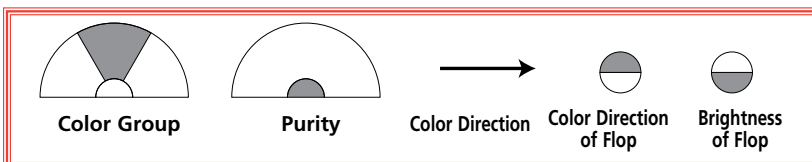
High jetness carbon black for use in solid blacks and to tint other colors. Readily darkens flop of metallic colors.



**Lampblack**

401 0311

Moves colors darker and dirtier on the face and flop. Has a blue chalky undertone.



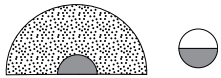
**ASK**



# Tinting Guide



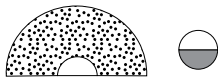
## Basecoat Aluminums



**Small Aluminum**

411 0411

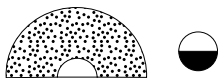
Small flake size. Lighter on the flop than 411 0412 Bright Small Aluminum.



**Bright Small Aluminum**

411 0412

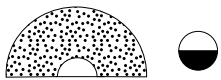
Small flake size. Bright on the face and slightly darker on the flop than 411 0411 Small Aluminum.



**Bright Medium Aluminum**

411 0413

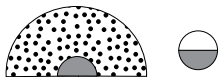
Small round shape flake. Gives a grainy bright sparkle with a dark flop.



**Medium Aluminum**

411 0414

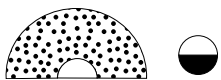
Medium shape flake. Lighter on the flop than 411 0413.



**Large Aluminum**

411 0415

Large flake size. Lighter flop than 411 0416 Coarse Aluminum.



**Coarse Aluminum**

411 0416

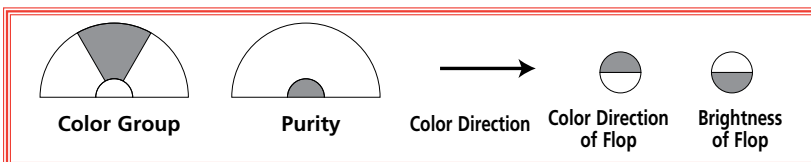
Large pancake shape flake. Brighter face and darker flop than 411 0415 Large Aluminum.



**Gold Aluminum**

411 0420

Medium size gold flake metallic. Used in addition to or substitute for silver metallic or pearl. Gives a gold sparkle with a yellow flop.



**ASK**

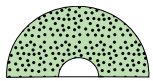


# Tinting Guide



## Pearls

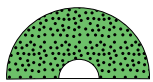
\*In order to ensure accurate color match, it is imperative that all paste pearls are strongly shaken for a minimum of 5 seconds before reduction and application. This shaking will ensure that the pearl and xirallic pigments are properly mixed before adding to a formula, thus producing more consistent color accuracy.



**Green Pearl**

421 0430

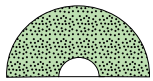
Used in addition to or substitute for metallic. Gives a blue green face and yellow green flop.



**Moss Green Pearl**

421 0431

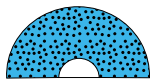
Used in addition to or substitute for metallic. Clean green pearl with a blue green face and yellow green flop. Yellower and stronger in tinting strength than 421 0430 Green Pearl.



**Fine Green Pearl**

421 0432

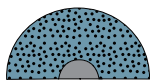
Used in addition to or substitute for metallic. Gives a blue green face and a yellow green flop. Smaller particle size than 421 0430 Green Pearl.



**Blue Pearl**

421 0433

Used in addition to or substitute for metallic. Gives a blue face and flop.



**Blue Silver Pearl**

421 0434

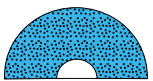
Used in addition to or substitute for metallic. Gives a blue gray face and flop.



**Blue Green Pearl**

421 0435

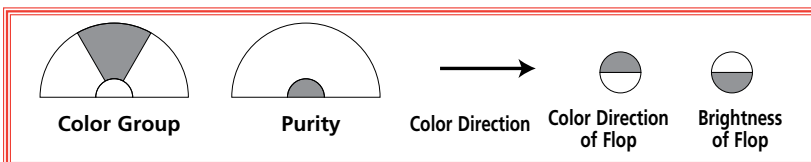
Used in addition to or substitute for metallic. Medium particle size with a blue green face and a yellow green flop.



**Fine Blue Pearl**

421 0436

Used in addition to or substitute for metallic. Gives a blue face and flop. Smaller particle size than 421 0433 Blue Pearl.



ASK

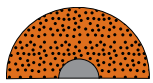


# Tinting Guide



## Pearls

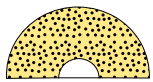
\*In order to ensure accurate color match, it is imperative that all paste pearls are strongly shaken for a minimum of 5 seconds before reduction and application. This shaking will ensure that the pearl and xirallic pigments are properly mixed before adding to a formula, thus producing more consistent color accuracy.



**Copper Pearl**

421 0437

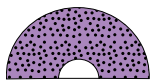
Used in addition to or substitute for metallic. Gives a copper (red brown) face and flop.



**Gold Pearl**

421 0440

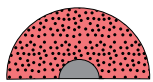
Used in addition to or substitute for metallic. Gives a gold-yellow face, with little effect on the flop.



**Lilac Pearl**

421 0441

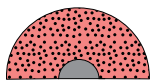
Used in addition to or substitute for metallic. Gives a red face to blue colors with little effect on the flop.



**Red Violet Pearl**

421 0442

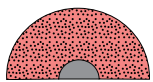
Used in addition to or substitute for metallic. Red blue face and flop.



**Red Pearl**

421 0443

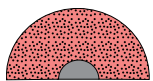
Used in addition to or substitute for metallic. Red yellow face and flop.



**Red Brown Pearl**

421 0444

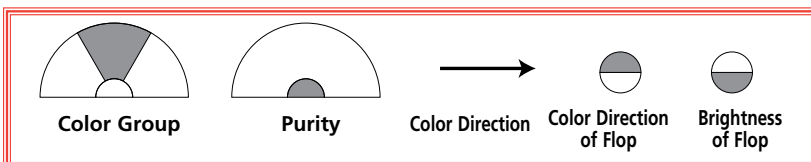
Used in addition to or substitute for metallic. Red yellow face and flop. Smaller particle size than 421 0442 Red Violet Pearl.



**Small Red Pearl**

421 0445

Used in addition to or substitute for metallic. Red yellow face and flop. Smaller particle size than 421 0443 Red Pearl.



**ASK**

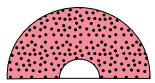


# Tinting Guide



## Pearls

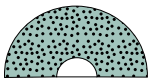
\*In order to ensure accurate color match, it is imperative that all paste pearls are strongly shaken for a minimum of 5 seconds before reduction and application. This shaking will ensure that the pearl and xirallic pigments are properly mixed before adding to a formula, thus producing more consistent color accuracy.



**Light Red Pearl**

421 0446

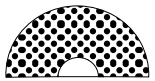
Used in addition to or substitute for metallic. Clean red blue face with little or no effect on the flop.



**Scarab Red Pearl**

421 0447

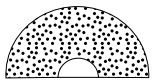
Used in addition to or substitute for metallic. Gives a green face with a red brown flop.



**White Pearl**

421 0448

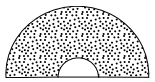
Clean white pearl used to match pearlescent and pearl midcoat colors.



**Small White Pearl**

421 0449

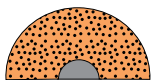
Used in addition to or substitute for metallic. Smaller particle size and lighter flop than 421 0448 White Pearl. Will lighten a dark flop without drastically changing the face.



**Fine White Pearl**

421 0450

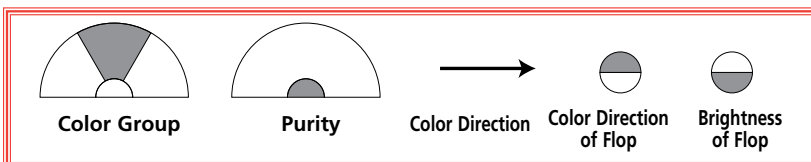
Used in addition to or substitute for metallic. Our smallest white mica with a lighter flop than 421 0449 Small White Pearl. Will lighten a dark flop without drastically changing the face.



**Bronze Gold Pearl**

421 0451

Used in addition to or substitute for metallic. Yellow face and flop.



**ASK**



# Tinting Guide



## Pearls

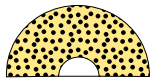
\*In order to ensure accurate color match, it is imperative that all paste pearls are strongly shaken for a minimum of 5 seconds before reduction and application. This shaking will ensure that the pearl and xirallic pigments are properly mixed before adding to a formula, thus producing more consistent color accuracy.



**Crystal Silver Pearl**

421 0460

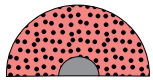
Synthetic pearlescent crystal. Smaller particle size than traditional pearl with much larger sparkle. Cleaner / less yellow flop than traditional pearl. Tints similar to 421 0449 Small White Pearl.



**Sunbeam Gold Pearl**

421 0462

Synthetic pearlescent crystal. Smaller particle size than traditional pearl with much larger sparkle. Cleaner / less yellow flop than traditional pearl. Tints similar to 421 0440 Gold Pearl.



**Radiant Red Pearl**

421 0463

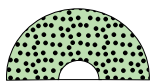
Synthetic pearlescent crystal. Smaller particle size than traditional pearl with much larger sparkle. Cleaner / less yellow flop than traditional pearl. Tints similar to 421 0443 Red Pearl.



**Galaxy Blue Pearl**

421 0464

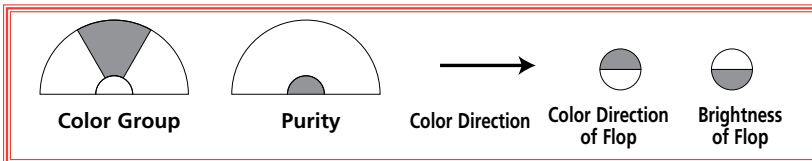
Synthetic pearlescent crystal. Smaller particle size than traditional pearl with much larger sparkle. Cleaner / less yellow flop than traditional pearl. Tints similar to 421 0433 Blue Pearl.



**Stellar Green Pearl**

421 0465

Synthetic pearlescent crystal. Smaller particle size than traditional pearl with much larger sparkle. Cleaner / less yellow flop than traditional pearl. Tints similar to 421 0430 Green Pearl.



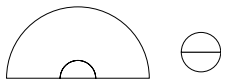
ASK



# Tinting Guide



## Specialty toners



**Effect Additive**

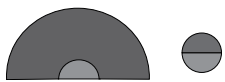
455 0271

10% or less can be used to lighten the flop of a metallic basecoat color and create the appearance of a larger metallic sparkle while having little effect on the face of the color. These effects are more subtle than using white or white pearl.

**Balancing Clear**

401 0300

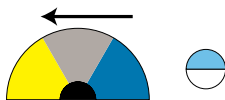
Basecoat balancing clear. Also used in 3-Stage mid-coat colors.



**Effect Black**

401 0313

Used in addition to metallic and pearl providing a soft antique metallic effect. In strong sunlight the flop appears smoky brown.



**Trans White**

401 0391

Used in addition to metallic or pearl producing a unique frosted glaze appearance with a yellow glow on the face and a blue flop.



**ASK**



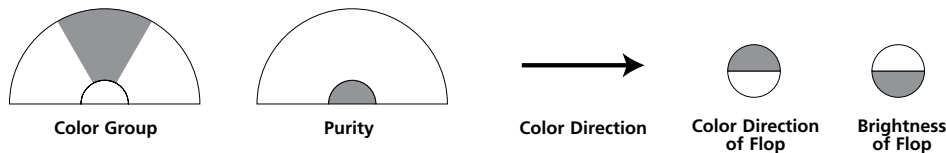
# Tinting Guide



## Using the AWX® Colorant Pictographs

The characteristics of color are consistent throughout the world, therefore the AWX® toner pictographs are designed to provide paint/color technicians a visual explanation of the characteristics of each colorant, independent of the technicians language or geographical location. Just as with a printed description of color characteristics, a basic knowledge of color theory is necessary to effectively utilize this tool.

The pictograph shows each colorant's characteristics of lightness, saturation, and hue from both Face and Flop as follows:



**Example:**  
Characteristics of 401 0343 HS Red Shade Blue.

	<b>HS Red Shade Blue</b>	<b>401 0343</b>	Red face and red flop blue. Used to tint solid, metallic, and pearl colors.
--	--------------------------	-----------------	---

**1) Color Group is the Basic Color.**

In the example given above, the "Color Group" is "Blue". Colorant groups are Blue, Violet, Magenta, Maroon, Red, Orange, Yellow, Gold, Green, White, Black, Aluminum, Pearl, and Specialty.

**2) Purity.**

Indicates how "Clean" or "Dirty / Gray" the colorant appears when viewed from the "Face" or "Head On". The white icon indicates that 401 0343 is a "clean" or "pure" blue. In simplest terms, "Pure" or "Clean" indicates an absence of Grayness; the term "Dirty" indicates the presence of Grayness.

**3) The arrow.**

Indicates "Color Direction" or "Cast" of the colorant as viewed from the "Face" or "Head On". Each colorant group can vary in only two directions and are indicated to the right and left of the "Color Group" icon. The arrow indicates that 401 0343 is a "Red Shade" Blue.

**4) Color direction of Flop.**

The "Red" icon indicates that when used in a metallic color, this blue appears "red" or "purple" when viewed from an angle.

**5) Brightness of Flop.**

The "gray" icon indicates that when used in a metallic color, this blue has a slightly "dark" appearance when viewed from an angle.

**ASK**

